

2^{me} Double de la Gavotte

59 $\text{♩} = 108 \text{ ca.}$

64 Bass Clarinet

70 Bass Clarinet

75

80 1. 2.

3^{me} Double de la Gavotte

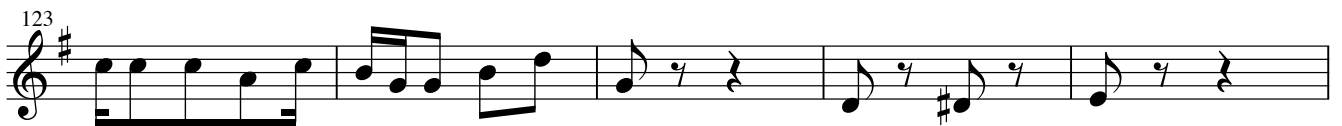
84 $\text{♩} = 72 \text{ ca.}$

93

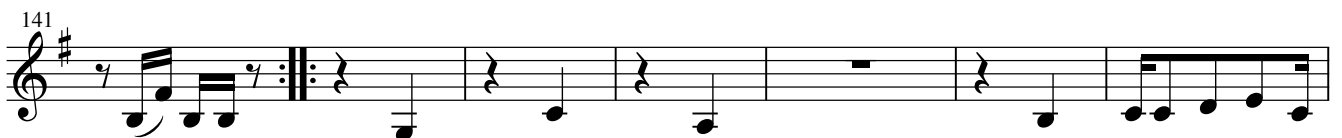
100 tr 1. 2.

4^{me} Double de la Gavotte

♩ = 96 ca.



5^{me} Double de la Gavotte



6^{me} Double de la Gavotte

Musical score for the 6th double of the Gavotte, measures 159-179. The score is written in treble clef with a key signature of one sharp (F#). It consists of five staves of music. The first staff (measures 159-163) begins with a repeat sign. The second staff (measures 164-168) contains a repeat sign in the middle. The third staff (measures 169-173) continues the melodic line. The fourth staff (measures 174-178) continues the melodic line. The fifth staff (measures 179-183) concludes with a first ending (1.) and a second ending (2.) leading to a final double bar line.