

Clarinet in B \flat 1

Gavotte et 6 Doubles

J.Ph.Rameau

transcribed by T.Yokohama

$\bullet = 80$

8

17

1^{er} Double de la Gavotte

25 $\bullet = 96$ ca.

8

36

41

46

3

52

1.

3

2.

2^{me} Double de la Gavotte

59 $\text{♩} = 108 \text{ ca.}$

69

76

1^{*p*} 2^{*p*}

3^{me} Double de la Gavotte

84 $\text{♩} = 72 \text{ ca.}$

89

94

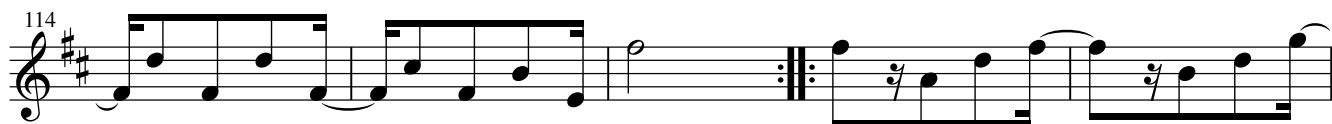
100

104

1^{*p*} 2^{*p*}

4^{me} Double de la Gavotte

♩ = 96 ca.



5^{me} Double de la Gavotte



154

1. 2.

6^{me} Double de la Gavotte

159

166

172

178

tr 1. p 2. p